

*toefl ibt.®

From words to the world.

世界著名院校 托福 iBT® 錄取分數要求

TOEFL iBT® Requirements of Top Universities Worldwide

全球 **160** 多個國家，
超過 **13,000** 所大學及院校認可

Accepted worldwide by more than **13,000** universities
and institutions in over **160** countries



From words to the world.

Stand Out with TOEFL iBT 托福考試助你脫穎而出！



托福 iBT 是全球最廣泛應用於留學、工作和移民申請的英語測驗。它亦是唯一以還原真實課堂情景的方式來考察閱讀、聽力、口說、寫作 4 個學術英語技能的考試。

TOEFL iBT is the world's premier English-language test for study, work and immigration. It's also the only test that measures all four academic English skills – reading, listening, speaking and writing – the way they are actually used in a classroom.

TOEFL iBT 考試在全球不同國家和地區提供至少兩種不同考試方式，你可以選擇最適合你的需要和偏好的考試方式。

The TOEFL iBT test offers 2 testing options, so you can choose the one that best suits your needs and preferences.

兩種便捷的考試方式 Test your way

Two ways to take the world's preferred assessment.



TOEFL iBT
At a Test Center



TOEFL iBT
Home Edition

感受一下 TOEFL iBT 考試體驗




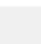
免費試做我們的 40 分鐘自定進度、濃縮版模擬考試，包括 4 個技能的試題。

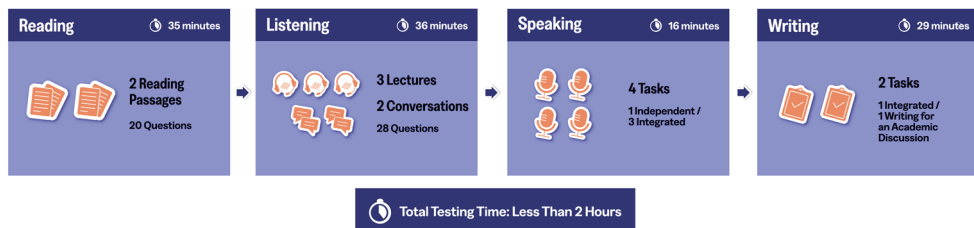
Start your TOEFL iBT journey with this 40-minute experience where you will become more familiar with the content and structure found in the full-length, just-under-2 hour-test.



Grow Anywhere. Become a TOEFL Taker at
ets.org/toefl

考試時間不到 2 小時！

 閱讀 20題	35分鐘	閱讀段落後回答有關問題。
 聽力 28題	36分鐘	回答與所聽到的簡短講座課或課堂討論內容有關的問題。
 口語 4題	16分鐘	談論某一熟悉話題及討論你讀到和聽到的內容材料。
 寫作 2題	29分鐘	整合型寫作: 先閱讀一個段落及聆聽一段錄音, 再就問題要求輸入你的回答。 學術討論型寫作: 在一線上課堂討論中陳述及支持你的觀點。
考試總時長	不到2小時	



考試成績 | Scores

EACH SECTION SCORE	TOTAL SCORE	RECEIVE SCORES IN
0-30	0-120	4-8 Days

TOEFL iBT 成績有效期為 2 年。

給你100%公平公正和不偏不倚的分數。托福考試僅通過中央評分系統進行評分, 絕不在考試中心進行。
100% Fair and Unbiased. TOEFL tests are only scored through a centralized scoring network — never at the test center.

MyBest® 成績是指在過去兩年內所有有效考試日期中, 你最高分數的組合。所有托福 iBT 成績報告均自動包括 MyBest 成績及當次考試日期的分數。

Show Your Best with MyBest® Scores. MyBest scores are the combination of your best section score from all valid test dates in the previous 2 years. All TOEFL iBT score reports automatically include MyBest scores and scores from a single test date.



了解更多 Learn more

[ets.org /toefl/test-takers/ibt/about](https://ets.org/toefl/test-takers/ibt/about)

一站式個人化 托福備考平台

提供你備考計劃和學習洞察，
助你取得最佳成績！

Prep smart with TOEFL® TestReady™

Your personalized, one-stop TOEFL iBT prep portal



Official test prep materials to support TOEFL iBT test takers!

AI - POWERED PERSONALIZATION



Tailored study plans,
curated prep recommendations

REALISTIC PRACTICE



Authentic content developed
by the makers of the test

ACTIONABLE FEEDBACK



In-depth performance
analysis and targeted
improvement strategies

VALUABLE INSIGHTS

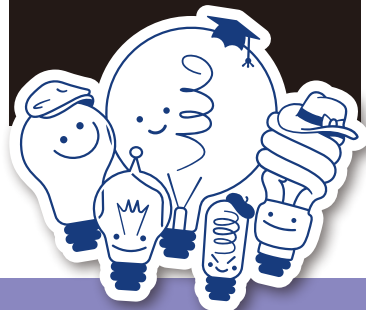


Identify areas in need of
focus to close skill gaps
more efficiently

TOEFL® TestReady™ 一站式備考平台，整合托福官方資源，運用 AI 技術提供個人化指導。

- 免費完整模擬練習測驗
- 每日一題：每天一題題目或單項任務，即時評分
- 個人化準備計劃：根據需求，運用 AI 制定專屬備考計劃
- 各項題型練習，並提供個人化反饋與建議
- 影片、課程、書籍、備考建議及進度追蹤等

立即免費註冊或登入您的 ETS 帳戶，即可免費使用 TOEFL TestReady 平台，掌握托福備考資源！事不宜遲，立即開啟你的托福旅程。



*toefl

Create your free account at
toefltestready.org

托福iBT考試, 帶您解鎖世界!

Unlock the world with TOEFL iBT



托福iBT考試被**160**多個國家及地區超過**13,000**所大學和院校所認可, 範圍包括澳洲、加拿大、紐西蘭、美國、英國以及整個歐洲和亞洲。

TOEFL iBT scores are accepted by more than **13,000** universities and other institutions in over **160** countries and territories, including Australia, Canada, New Zealand, the U.S., the U.K. and all across Europe and Asia.



在加拿大, 托福iBT成績被**100%**的大學所接受, 而超過**80%**的研究生項目更青睞托福iBT考試而非其他英語語言考試。¹

Accepted by **100%** of universities in Canada. More than **80%** of graduate programs in Canada prefer the TOEFL iBT test over other English language tests.¹



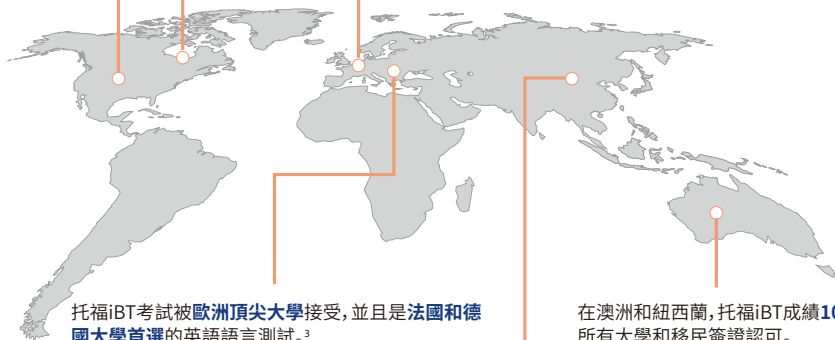
在美國, 托福iBT考試**100%**被認可。**90%**的美國大學更青睞托福iBT考試而非其他英語語言考試。²

Preferred by **9 out of 10 universities in the United States**² and accepted everywhere.



托福iBT考試被**100%**的英國大學接受, 包括所有羅素集團成員大學。

Accepted by **100%** of U.K. universities, including the **Russell Group**.



托福iBT考試被歐洲頂尖大學接受, 並且是法國和德國大學首選的英語語言測試。³

Accepted by the **top European universities** and the **most preferred test in France and Germany**.³



在澳洲和紐西蘭, 托福iBT成績**100%**被所有大學和移民簽證認可。

Accepted by **100%** of Australian and New Zealand universities and for all immigration visas.



托福iBT考試在亞洲國家和地區被廣泛接受, 包括在中國大陸、中國香港、日本、韓國和馬來西亞的頂尖大學。

Widely accepted throughout Asia, including at top universities in mainland China, Hong Kong (China), Japan, Korea, and Malaysia.

¹Source: Survey of 44 graduate admissions officers at Canadian universities.

²Source: Survey of 94 admissions officers at US universities who accept both TOEFL iBT and IELTS® scores and who expressed a preference.

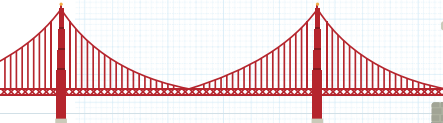
³Source: Survey of 59 admissions officers at French universities and 100 admissions officers at German universities.

U.S. News 美國前 100 名大學 托福 iBT 錄取分數要求

TOEFL iBT Requirements of the Top 100 Universities
in the United States



TOP UNIVERSITIES in the United States



Ranking	Institution	TOEFL iBT Requirements
1	Princeton University	No Minimum Requirement
2	Massachusetts Institute of Technology	90
3	Harvard University	No Minimum Requirement
3	Stanford University	89
5	Yale University	No Minimum Requirement
6	University of Pennsylvania	100
7	California Institute of Technology	100 (no part score under 25)
7	Duke University	100
9	Brown University	105 90 (Graduate)
9	Johns Hopkins University	100 (R26, L26, W22, S25)
9	Northwestern University	No Minimum Requirement
12	Columbia University	105
12	Cornell University	100
12	University of Chicago	No Minimum Requirement
15	University of California-Berkeley	80
15	University of California-Los Angeles	87 (R21, L17, W25, S24)
17	Rice University	90
18	Dartmouth College	No Minimum Requirement
18	Vanderbilt University	88
20	University of Notre Dame	80 (S ≥ 23)

Ranking	Institution	TOEFL iBT Requirements
21	University of Michigan - Ann Arbor	84
22	Georgetown University	100
22	University of North Carolina - Chapel Hill	90
24	Carnegie Mellon University	102 (no part score under 25)
24	Emory University	100
24	University of Virginia	No Minimum Requirement
24	Washington University in St. Louis	90
28	University of California - Davis	80
28	University of California - San Diego	83
28	University of Florida(UF)	Undergraduate:No Minimum Requirement Graduate:80
28	University of Southern California	100 (no part score under 20)
32	University of Texas - Austin	79
33	Georgia Institute of Technology	Graduate: 90 (no part score under 19)
33	University of California - Irvine	80
35	New York University	No Minimum Requirement competitive:100
35	University of California,Santa Barbara(UCSB)	80
35	University of Illinois Urbana - Champaign (UIUC)	103
35	University of Wisconsin - Madison	80
39	Boston College	100
40	Rutgers University - New Brunswick	79
40	Tufts University	85
40	University of Washington	76
43	Boston University	90 (no part score under 20)
43	The Ohio State University	79
43	Purdue University - West Lafayette	80 (W18, S18, L14, R19)
46	University of Maryland - College Park	95
47	Lehigh University	90

Ranking	Institution	TOEFL iBT Requirements
47	Texas A&M University	80
47	University of Georgia	80 (S20, W20)
47	University of Rochester(UR)	100
47	Virginia Tech	80 (no part score under 16)
47	Wake Forest University	79
53	Case Western Reserve University	90
53	Florida State University	80
53	Northeastern University	99
53	University of Minnesota - Twin Cities	79 (W section21)
53	William & Mary	100
58	Stony Brook University - SUNY	80
58	University of Connecticut	79
60	Brandeis University	100
60	Michigan State University	79 (no part score under 17)
60	North Carolina State University - Raleigh	80 (no part score under 18)
60	The Pennsylvania State University - University Park	80
60	Rensselaer Polytechnic Institute(RPI)	88
60	Santa Clara University	90
60	University of California - Merced	80 (W19, S26 , L17, R18)
67	George Washington University	80
67	Syracuse University	80 (W21, S20, R20, L20)
67	University of Massachusetts - Amherst	80 (no part score under 20)
67	University of Miami	80
67	University of Pittsburgh	100 (no part score under 21)
67	Villanova University	Undergraduate: No Minimum Requirement Graduate: 80
73	Binghamton University - SUNY	80
73	Indiana University - Bloomington	79
73	Tulane University	95
76	Colorado School of Mines	79
76	Pepperdine University	85
76	Stevens Institute of Technology	80
76	University of Buffalo - SUNY	70
76	University of California - Riverside	80

Ranking	Institution	TOEFL iBT Requirements
76	University of Delaware	79 (S section 18)
82	Rutgers University - Newark	79
82	University of California - Santa Cruz	80
82	University of Illinois - Chicago (UIC)	80
82	Worcester Polytechnic Institute	84
86	Clemson University	80
86	Marquette University	R18, L18, S20, W20
86	New Jersey Institute of Technology	79
89	Fordham University	90
89	Southern Methodist University	90 (R20, L20, W24, S24)
89	Temple University	79
89	University of South Florida (USF)	65
93	Auburn University	79 (no part score under 16)
93	Baylor University	80
93	Gonzaga University	80
93	Loyola Marymount University	90
93	University of Iowa	80 (no part score under 17)
98	Drexel University	79
98	Illinois Institute of Technology	80 (20 minimum in all bands)
98	Rochester Institute of Technology	79
98	Rutgers University--Camden	79
98	Texas Christian University	80
98	University of Oregon	88
98	University of San Diego	80



美國前 50 名商學院 托福 iBT 錄取分數要求 (研究生課程)

TOEFL iBT requirements of the Top 50 Business Schools in the United States (Graduate)

Ranking	Institution	TOEFL iBT Requirements
1	University of Chicago (Booth)	104
2	Northwestern University (Kellogg)	100
3	University of Pennsylvania (Wharton)	No Minimum Requirement
4	Massachusetts Institute of Technology (Sloan)	No Minimum Requirement
5	Harvard University	109
6	Dartmouth College (Tuck)	No Minimum Requirement
6	Stanford University	100
8	University of Michigan--Ann Arbor (Ross)	100
8	Yale University	101
10	New York University (Stern)	100
11	Columbia University	99
11	Duke University (Fuqua)	No Minimum Requirement
11	University of California, Berkeley (Haas)	90
14	University of Virginia (Darden)	No Minimum Requirement Average: 106
15	Cornell University (Johnson)	100 (no part score under 25)
15	University of Southern California (Marshall)	90 (no part score under 20) exempt from taking ISE exam
17	Emory University (Goizueta)	100
18	Carnegie Mellon University (Tepper)	R25, L25, S25, W25
19	University of California--Los Angeles (Anderson)	87 (R21, L17, S24, W 25)
20	University of Texas--Austin (McCombs)	No Minimum Requirement
20	University of Washington (Foster)	100
22	Indiana University (Kelley)	100
22	University of North Carolina - Chapel Hill (Kenan-Flagler)	100 (S24)
24	Georgetown University (McDonough)	100
24	Rice University (Jones)	90
26	Georgia Institute of Technology (Scheller)	90 (no part score under 19)
27	The University of Texas at Dallas (Jindal)	80

Ranking	Institution	TOEFL iBT Requirements
27	University of Rochester (Simon)	No Minimum Requirement
27	Vanderbilt University (Owen)	No Minimum Requirement
30	University of Notre Dame (Mendoza)	No Minimum Requirement
31	University of Georgia (Terry)	90 (Speaking over 25)
31	University of Minnesota--Twin Cities (Carlson)	90 (R22, L20, S23, W22)
33	Michigan State University (Broad)	100
33	Southern Methodist University (Cox)	90 (R&L,20 W&S 24)
35	Arizona State University (W.P. Carey)	80
35	Brigham Young University (Marriott)	100
37	Pennsylvania State University - University Park (Smeal)	80 (S19)
37	University of California--Irvine (Merage)	80
37	Washington University in St. Louis (Olin)	No Minimum Requirement Average: 104
40	University of Florida (Warrington)	80
40	University of Wisconsin--Madison	92
42	Boston College (Carroll)	100
42	University of Maryland--College Park (Smith)	96 (S22, L24, R26, W24)
44	Ohio State University (Fisher)	100 (Speaking over 24)
45	Rutgers University - Newark and New Brunswick	No Minimum Requirement
45	Texas A&M University--College Station (Mays)	100
45	William & Mary Mason	No Minimum Requirement Average: 100
48	University of Utah (Eccles)	80
49	CUNY Bernard M. Baruch College (Zicklin)	100
50	Texas Christian University (Neeley)	100

美國前 50 名工程學院 托福 iBT 錄取分數要求 (研究生課程)

TOEFL iBT requirements of the Top 50 Engineering Colleges in the United States (Graduate)

Ranking	Institution	TOEFL iBT Requirements
1	Massachusetts Institute of Technology	90
2	Stanford University	89
3	University of California - Berkeley	90
4	Purdue University - West Lafayette	80 (R19, L14, W18, S18)
5	Carnegie Mellon University (Carnegie)	84 (R22, L22, S18, W22)
5	Georgia Institute of Technology	TOEFL iBT ≥ 90 (each section must score 19 or higher)
7	California Institute of Technology	No minimum requirement
7	University of Michigan - Ann Arbor	84
7	University of Texas - Austin (Cockrell)	79
10	Texas A&M University - College Station	80
11	University of Illinois Urbana - Champaign (Grainger)	79
12	University of California - San Diego (Jacobs)	85
13	Cornell University	R20, L15, W20, S27
14	Johns Hopkins University (Whiting)	100
15	University of Southern California (Viterbi)	90, with not less than 20 in each section
16	University of California - Los Angeles (Samueli)	87 (R21, L17, W25, S24)
17	Columbia University (Fu Foundation)	99
17	Northwestern University (McCormick)	80
19	University of Colorado - Boulder	80
19	University of Maryland - College Park	96 (S22, L24, R26, W24)
19	University of Pennsylvania	100
22	Duke University (Pratt)	90
23	Harvard University (Paulson)	80
23	Princeton University	with not less than 28 on Speaking
25	North Carolina State University	A minimum of 18 on each section of the test with a minimum total of 90

Ranking	Institution	TOEFL iBT Requirements
25	University of Washington	80
27	Ohio State University	79
27	University of California - Santa Barbara	80
27	University of Wisconsin - Madison	92
30	Rice University (Brown)	90
30	Virginia Tech	90 (no part score under 20)
32	Northeastern University	79
32	Pennsylvania State University - University Park	80 (S19)
34	Boston University	Overall: 90 R21, L8, W22, S23
34	University of California - Davis	80
34	University of California - Irvine (Samueli)	80
37	New York University (Tandon)	90
37	University of Dayton	80
37	University of Minnesota - Twin Cities	79 (R19, W21)
37	University of Virginia	No Minimum Requirement
41	Arizona State University (Fulton)	80
42	University of Delaware	100
42	University of Rochester (Hajim)	100
42	Vanderbilt University	89
42	Yale University	No Minimum Requirement
46	Iowa State University	79
47	University of Florida (Werthiem)	80
47	University of Notre Dame	80, with not less than 23 in Speaking
47	University of Pittsburgh (Swanson)	80
47	Wichita State University	79

英國前 50 名大學 托福 iBT 錄取分數要求

TOEFL iBT Requirements of the Top 50 Universities in the UK

* Rankings are from the 2023 Times Higher Education World University Rankings in the UK.

* Requirements of TOEFL iBT scores are from the school's official website, updated January 2024.



TOP UNIVERSITIES
in the United Kingdom



Ranking	Institution	TOEFL iBT Requirements
1	University of Oxford	110 (R24, L22, S25, W24)
2	University of Cambridge	100 (no part score under 25)
3	Imperial College London	92 (no part score under 20)
4	University College London	92 (R24, L20, S20, W24)
5	University of Edinburgh	92 (no part score under 20)
6	King's College London	100(R23, L23, S23, W25)
7	London School of Economics and Political Science	100 (R25, L24, S24, W27)
8	University of Manchester	72
9	University of Bristol	83 (R20, L21, S21, W20) or (R20, L20, S23, W20)
10	University of Glasgow	90 (R20, L19, S19, W23)
11	University of Southampton	81 (R18, L17, S20, W17)
12	University of Birmingham	80 (R19, L19, S21, W19)
13	The University of Sheffield	80 (R18, L17, S20, W17)
14	University of Warwick	87 (R22, L21, S23, W21)
15	University of Leeds	80 (R18, L17, S20, W19)
16	The University of Nottingham	80 (R18, L17, S20, W17)
17	Queen Mary University of London	79 (R18, L17, S20, W17)
18	University of York	87 (no part score under 21)
19	Lancaster University	87 (R18, L17, S17, W20)
20	University of Liverpool	88 (R17, L17, S19, W17)

Ranking	Institution	TOEFL iBT Requirements
20	Newcastle University	90 (R18, L17, S20, W17)
22	Durham University	92 (no part score under 23)
23	University of Exeter	87 (no part score under 21)
24	Cardiff University	90 (R18, L17, S20, W17)
25	University of St Andrews	79 (R13, L12, S18, W21)
26	University of Leicester	80 (no part score under 20)
26	University of Aberdeen	78 (R18, L17, S20, W21)
26	Queen's University of Belfast	80 (R18, L17, S20, W17)
26	University of Reading	88
26	University of Sussex	80 (R18, L17, S20, W17)
31	University of East Anglia	79 (R18, L17, S20, W17)
31	University of Surrey	80 (R18, L17, S20, W17)
31	University of Bath	90 (no part score under 21)
31	Swansea University	79
31	Loughborough University	92 (no part score under 22)
36	University of Dundee	80 (R18, L17, S20, W19)
36	St George's, University of London	79 (R18, L14, S14, W24)
36	University of Essex	76 (R18, L17, S20, W17)
36	Royal Holloway, University of London	88 (R18, L17, S20, W26)
36	University of Strathclyde	73 (R18, L17, S20, W18)
41	City, University of London	72 (R18, L17, S20, W17)
41	Heriot-Watt University	79 (R18, L17, S20, W21)
41	Brunel University London	77 (R18, L17, S20, W17)
44	Goldsmiths, University of London	70 (R18, L18, S18, W19)
44	University of Hull	79 (R18, L17, S20, W17)
44	University of Plymouth	76 (R18, L17, S20, W18)
44	University of Kent	85(R17, L17, S20, W17)
44	Aston University	78 (R12, L11, S17, W20)
44	Bangor University	75 (R18, L17, S20, W18)
44	Bournemouth University	60 (R13, L12, S18, W21)

澳洲前 20 名大學 托福 iBT 錄取分數要求

TOEFL iBT Requirements of the Top 20 Universities in Australia

* Rankings from QS World University Rankings 2024.

* Requirements of TOEFL iBT scores are from the school's official website, updated October 2023.



**TOP UNIVERSITIES
in Australia**



AREA 7,692,024 sq.km.
LANGUAGE English
CAPITAL Canberra



Ranking	Institution	TOEFL iBT Requirements
14	University of Melbourne	79 (R13, L13, S18, W21)
19	University of Sydney	85 (R17, L17, S17, W19)
19	University of New South Wales	90 (R22, L22, S22, W23)
34	Australian National University	80 (R20, L18, S18, W20)
42	Monash University	79 (R13, L12, S18, W21)
43	University of Queensland	87 (R19, L19, S19, W21)
72	University of Western Australia	82 (R18, L20, S20, W22)
89	University of Adelaide	79 (R13, L13, S18, W21)
90	University of Technology Sydney	79-93 (W21)
140	RMIT	79 (R13, L12, S18, W21)
162	University of Wollongong	70 (R18, L12, S12, W18)
173	University of Newcastle	60 (R13, L12, S18, W21)
183	Curtin University	79 (R13, L13, S18, W21)
195	Macquarie University	66 (R10, L9, S14, W16)
189	Queensland University of Technology	79 (R16, L16, S18, W21)
233	Deakin University	69 (W21)
242	LaTrobe University	64 (R13, L 12, S18, W21)
243	Griffith University	79 (each Section: 19)
285	Swinburne University of Technology	64 (R13, L12, S18, W21)
307	University of Tasmania	72 (R10, L9, S16, W19)

紐西蘭頂尖大學 托福 iBT 錄取分數要求

TOEFL iBT Test Requirements of the Top Universities in New Zealand

* Rankings from QS World University Rankings 2024.

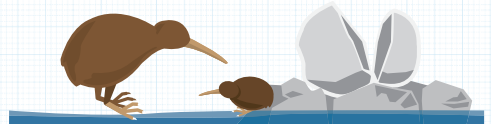
* Requirements of TOEFL iBT scores are from the school's official website, updated October 2023.



TOP UNIVERSITIES in New Zealand

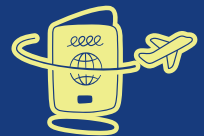


AREA 268,021 sq.km.
LANGUAGE English, Maori
CAPITAL Wellington



Ranking	Institution	TOEFL iBT Requirements
68	The University of Auckland	80 (W21)
206	University of Otago	80 (W20)
239	Massey University	80 (W19)
241	Victoria University of Wellington	80
250	University of Waikato	80 (W21)
256	University of Canterbury	80 (R19, W19, L19)
362	Lincoln University	60 (W18)
407	Auckland University of Technology	80 (R15, W20, L15, S18)

Australian and New Zealand admissions officers say “YES” to TOEFL iBT



- Accepted by 100% of Australian universities and for all Australian visas and immigration.
- Accepted by 100% of New Zealand universities and the New Zealand Qualifications Authority (NZQA), and for New Zealand permanent residence.

加拿大前 20 名大學 托福 iBT 錄取分數要求

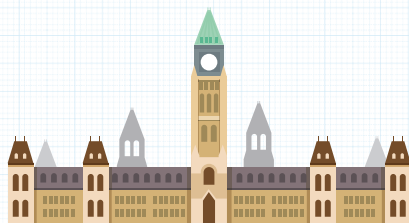
TOEFL iBT Requirements of the Top 20 Universities in Canada

* Rankings from QS World University Rankings 2024.

* Requirements of TOEFL iBT scores are from the school's official website, updated October 2023.

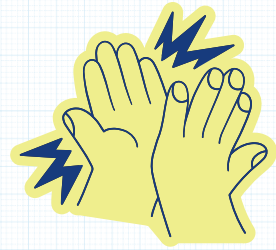


TOP UNIVERSITIES in Canada



Ranking	Institution	TOEFL iBT Requirements
21	University of Toronto	89 Writing: 22, Speaking: 22
30	McGill University	90 Writing: 21, Speaking: 21, Reading: 22, Listening: 22
34	University of British Columbia	90 Writing: 21, Speaking: 21, Reading: 22, Listening: 22
111	University of Alberta	90 Writing: 21, Speaking: 21, Reading: 21, Listening: 21
112	University of Waterloo	90 (Undergraduate & most Graduate) Writing: 25, Speaking: 25
114	Western University	83 Writing: 20, Speaking: 20, Reading: 20, Listening: 20
141	Université de Montréal	N/A (French-language university)
182	University of Calgary	86
189	McMaster University	86 Writing: 20, Speaking: 20, Reading: 20, Listening: 20
203	University of Ottawa	86 Writing: 22
209	Queen's University at Kingston	88 Writing: 20, Speaking: 20, Reading: 20, Listening: 20
298	Dalhousie University	90 All bands: 20
318	Simon Fraser University	88 Reading: 20, Writing: 20, Speaking: 20, Listening: 20

Ranking	Institution	TOEFL iBT Requirements
322	University of Victoria	90 Writing: 20, Speaking: 20, Reading: 20, Listening: 20
345	University of Saskatchewan	86 Writing: 19, Speaking: 19, Reading: 19, Listening: 19
353	York University	Undergraduate Overall score: 88
387	Concordia University	90 Writing: 20, Speaking: 20, Reading: 20, Listening: 20
441	Université Laval	N/A (French-language university)
486	University of Guelph	89 Writing: 21, Speaking: 21, Reading: 21, Listening: 21
641-650	Memorial University of Newfoundland	79 Writing: 20, Speaking: 17, Reading: 20, Listening: 17
641-650	University of Windsor	83 Writing: 20



愛爾蘭頂尖院校 托福 iBT 錄取分數要求

TOEFL iBT Test Requirements of the Top Institutions in Ireland

* Rankings from QS World University Rankings 2024.

* Requirements of TOEFL iBT scores are from the school's official website, updated October 2023.



TOP UNIVERSITIES in Ireland



8 Universities

Ranking	Institution	TOEFL iBT Requirements
81	Trinity College Dublin	88
171	University College Dublin	90 W21, S19, R19, L19
289	University of Galway	88 W8, S16, R8, L7
292	University College Cork	90 W21, S19, R19, L19
426	University of Limerick	90
436	Dublin City University	90 W21, S19, R19, L19
801-850	Maynooth University	90 W21, S19, R19, L19
851-900	Technological University of Dublin	80 W21, S18, R18, L18

11 Technology Colleges



Ranking	Institution	TOEFL iBT Requirements
1	Athlone Institute of Technology	60
2	Institute of Technology Carlow	70 W15, S15, R15, L15
3	Dundalk Institute of Technology	59
4	Institute of Technology Tralee	70 W15, S15, R15, L15
5	Waterford Institute of Technology	70 W15, S15, R15, L15
6	Galway Mayo Institute of Technology	70 W15, S15, R15, L15
7	Limerick Institute of Technology	60
8	Letterkenny Institute of Technology	70
9	Institute of Technology Sligo	70
10	Cork Institute of Technology	80 W17, S20, R18, L17
11	Institute of Art, Design and Technology	80

3 Independent Colleges

Ranking	Institution	TOEFL iBT Requirements
1	Griffith College	79 W19, S19, R19, L19
2	National College of Ireland	60
3	Dublin Business School	60

亞洲頂尖大學 托福 iBT 錄取分數要求



TOEFL iBT Requirements of the Top Universities in Aisa

* Rankings from QS World University Rankings 2024.

* Requirements of TOEFL iBT scores are from the school's official website, updated October 2023.

Ranking	Institution	TOEFL iBT Requirements
8	National University of Singapore(NUS)	93
17	Peking University	80
25	Tsinghua University	87
26	Nanyang Technological University, Singapore(NTU)	90
26	The University of Hong Kong	93
28	The University of Tokyo	95
41	Seoul National University	80
44	Zhejiang University	100
46	Kyoto University	80
47	The Chinese University of Hong Kong(CUHK)	80
50	Fudan University	N/A
51	Shanghai Jiao Tong University	80
56	KAIST - Korea Advanced Institute of Science & Technology	83
60	The Hong Kong University of Science and Technology	80
65	The Hong Kong Polytechnic University	80
65	Universiti Malaya (UM)	53
69	National Taiwan University (NTU)	71
70	City University of Hong Kong	79
76	Yonsei University	No Minimum Requirement
79	Korea University	No Minimum Requirement
80	Osaka University	80
91	Tokyo Institute of Technology (Tokyo Tech)	No Minimum Requirement
100	Pohang University of Science and Technology (POSTECH)	79 (Students Exchange Program)
113	Tohoku University	79
137	University of Science and Technology of China	80

Ranking	Institution	TOEFL iBT Requirements
141	Nanjing University	78 (Students Exchange Program)
145	Sungkyunkwan University (SKKU)	No Minimum Requirement
158	Universiti Putra Malaysia (UPM)	60
159	Universiti Kebangsaan Malaysia (UKM)	46
164	Hanyang University	80
164	Kyushu University	80
173	Qatar University	No Minimum Requirement
176	Nagoya University	80
188	Universiti Teknologi Malaysia (UTM)	46
194	Wuhan University	80
196	Hokkaido University	79
199	Waseda University	No Minimum Requirement
211	Chulalongkorn University	79
214	Keio University	No Minimum Requirement
216	Tongji University	80
217	National Yang Ming Chiao Tung University	79
226	American University of Beirut (AUB)	79
228	National Cheng Kung University (NCKU)	72
233	National Tsing Hua University	71

Sino-foreign joint venture universities

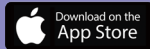
Institution	TOEFL iBT Requirements
UIC	79
Israel Institute of Technology	80
DUKE KUNSHAN UNIVERSITY	Graduate: 90
University of Nottingham	80 (W17, S20, R18, L17)
NYU SHANGHAI	100
WENZHOU-KEAN UNIVERSITY	79
The Graduate School of CUHK-Shenzhen	79
Xi'an Jiaotong-Liverpool University	62
The Hong Kong University of Science and Technology(Guangzhou)	80

**Move the world.
Be extraordinary.
Go forward.
Become a TOEFL Taker today!**



改變未來，成就非凡的自己！勇敢邁向托福之路！

TOEFL® Official App



關注托福官方公眾號



@TOEFL-official

***toefl®**

ets.org/toefl